



## RED TRIANGLE

*'The Home of Alvis Cars'*



COMMON LANE, KENILWORTH, WARWICKSHIRE CV8 2EL, ENGLAND  
TEL: SERVICE & RESTORATION 01926 864867 PARTS 01926 857303 FAX:01926 857305  
[www.redtriangle.co.uk](http://www.redtriangle.co.uk)  
e-mail: [enquiries@redtriangle.co.uk](mailto:enquiries@redtriangle.co.uk)

OWNER

ALVIS

CLUB

# INTERNATIONAL

7th 8th 9th June 2002



Harewood House  
Yorkshire





Alvis plc wishes the Owner Club every success on  
International Alvis Day 2002



Alvis plc

34 Grosvenor Gardens, London, SW1W 0AL, United Kingdom  
Tel: +44 (0)20 7808 8888 Fax: +44 (0)20 7808 8859 www.alvis.plc.uk

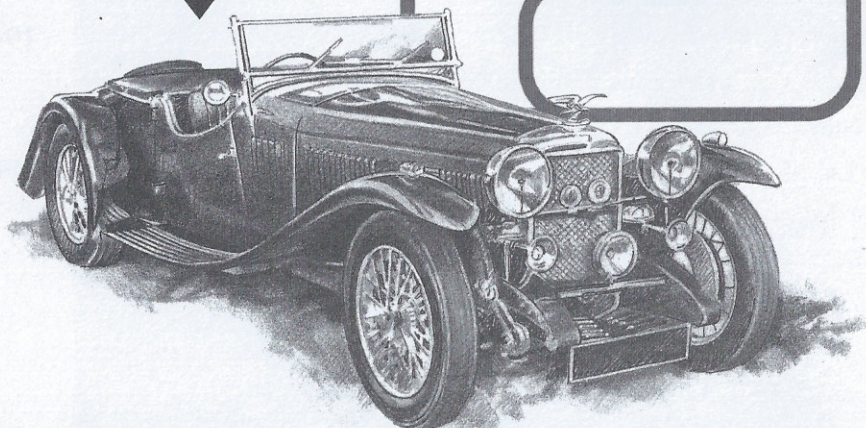
	Page Number
The 47th International Meeting	3
Alvis Specials	9
Awards	14-15
Concours Classifications	14
Driving Tests	19-21
Driving Test Classifications	15
The Dukes Car (H.R.H Prince Phillip)	11
Field Layout	Centre Fold
Future International Events	27
Officials Listing	7
Map How To Get Here (And Away)	25
Next Years A.O.C. International	27
Northern A.O.C. Chairmans Welcome	5
Harewood - A Guide	25
Programme Of Events	3
Registration	1
Recipe Book	23
Trophies	15

### REGISTRATION (Sunday)

Please register with the control office on arrival.  
Please have driving licence and membership cards available  
(only when entering driving test).

Your Raffle No. is 0240





The Market Leader

## Whatever you Drive Whenever you Drive it

Exclusive to members of the Alvis Owner Club, Insurance policies from Footman James provide top quality cover at competitive premiums for veteran, vintage, classic, and modern cars with unique discounts for limited mileage.

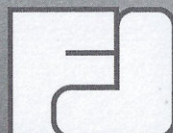
Let us select the right insurance for all your motoring needs.

FOR INDIVIDUAL SERVICE AND COMPLETE PEACE OF MIND

**Call us Today**

The Enthusiast's Insurance Broker

# FOOTMAN JAMES



## 0121 561 4196

The Market Leader

Member of General Insurance Standards Council

An open+direct Company



*The Club For All Alvis Owners Founded 1951*

## The 47th International Alvis Weekend

Saturday 8th June 2002

Day choice

- i Tours of the Yorkshire Dales with lunch halt.
- ii Treasures of York a conducted tour
- iii Shop till you drop in Harrogate

International dinner 7.30pm for 8pm

At The Garden Room Restaurant

The Royal Horticultural Society Gardens, Harlow Carr, Harrogate.

## PROGRAMME OF EVENTS

Concours Judging	1.00 - 2.30
Driving Tests	12.30 - 2.00
Raffle Draw	3.45pm
Presentation of Awards	4.00pm
All Vehicle Display	11am - 4pm
Owners Spare Parts Stall	11am - 3.30pm
Club Regalia & Boutique	11am - 3.30pm





● **BLAUPUNKT**

Bosch Group

*Professional Series*

Passenger  
entertainment  
from ● **BLAUPUNKT**

For further  
information contact:

**Autosound Limited**

4, Lister Street, Dudley Hill, Bradford, West Yorkshire, BD4 9PQ.  
Telephone: +44 (0) 1274 688990 Facsimile: +44 (0) 1274 651318  
E-mail: [sales@autosound.ltd.uk](mailto:sales@autosound.ltd.uk) Web-site: [www.autosound.ltd.uk](http://www.autosound.ltd.uk)

Message from the Chairman of International  
Alvis Day 2002

Welcome to International in the North. It is apt that in Her Majesty's Jubilee Year our event is centred on the Harewood estate. Not only is it a wonderful setting but it has very close connections with our Royal Family.

We have tried to make this years event a little different. Alvis are still the focal point, but you will see many other attractions which we hope you will enjoy. Harewood itself offers the bird garden, the boating lake, the wonderful gardens, the Courtyard restaurant and of course the house itself, especially the old kitchens.

It is our sincere wish that you enjoy your visit, meet old and make new friends, and take away a taste of Yorkshire. As you know, we in the Northern Section are your hosts for the next two Internationals. All will be different and give you a taste of the three very unique regions within our area.

I am sure you appreciate the effort and energy that's gone into organising this event, and I in turn thank all members of the Northern Section for their generous help and support that they have so freely given.

We trust you will enjoy the weekend and look forward to welcoming you again in 2003.

Yours Sincerely,

**Robin Bendall.**



Beat  
this!

# CAR CARPETS

**SUZUKI 410, 413 SOFT TOPS FROM £145**

**CONVERTIBLE TOP FORD XR3, GOLF FROM £170**

- Seats for most vehicles
- Seat repairs
- Full interior carpets
- Leather interiors

Alfa Romeo, Alvis, American, Aston Martin, Audi, Austin, Bedford, Bentley, BWW, Bristol, Citroen, Colt, Daf, Daihatsu, Datsun, Ferrari, Fiat, Ford, Healey, Honda, Hyundai, Isuzu, Jaguar, Jensen, Lada, Lamborghini, Lancia, Land-Rover, Limousines, Lotus, Mazda, Mercedes, MG, MGB/Midget, Mini, Mitsubishi, Morgan, Morris, Nissan, NSU, Opel, Panther, Peugeot, Porsche, Rover, Range Rover, Reliant, Renault, Riley, Rolls Royce, Saab, Seat, Skoda, Subaru, Sunbeam, Suzuki, Talbot, Toyota, Triumph, TVR, Vauxhall, Volkswagen, Volco, Yugo, Vans, Bedford Rascal, Midi, Nissan Prairie, Renault Espace, Honda, Shuttle, King cab, Urvan, Trucks, P100, Hilux, King Cab, Car carpets off the roll 36in wide £7.50 a metre/72in wide £15 a metre.

**MOST  
BRITISH  
EUROPEAN  
JAPANESE &  
AMERICAN**

**ALSO CARS,  
VANS  
TRUCKS**

- Luggage covers
- Keep clean boot liners



**FULL FLOOR PLUS SILLS  
AND WHEELARCHES**

4x4 and People  
Carrier  
Rear seats

**SALE PRICE**

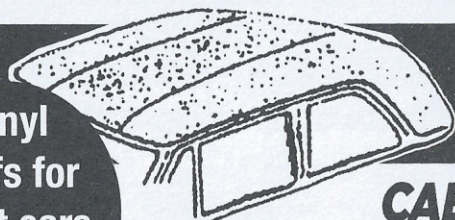
**FULL SET  
FROM**

**£29.50  
+POST**

**SUZUKI  
SOFT TOPS**

**OLD  
CARS  
NEW  
CARS**

**Vinyl  
roofs for  
most cars  
from £45**



**VINYL ROOF KITS  
and interior headliners**

- Protector seat covers
- All sizes

**SPECIAL OFFER!**  
**FREE** Full interior  
carpets and wheel  
cover with some  
Suzuki Hoods!!!

**CAR  
COVERS  
ALL  
SIZES**

**CABRIOLET HOODS**

Available in all colours from £170.00 each  
including VAT Glass window - linking not supplied.

**SPECIAL OFFER**  
**FREE HOOD COVER  
AND FULL INTERIOR  
CARPET WITH  
SOME HOODS**  
**PHONE FOR DETAILS**



(Prop. P. G Hughes)

01604  
646696

**UPHOLSTERY SUPPLIES**  
Worldwide Mail Order Fax: 00 44 1933 228644  
**www.vehiclehoods.com**

01604  
646696

## INTERNATIONAL ALVIS DAY 2002 OFFICIALS

CHAIRMAN  
SECRETARY  
TREASURER  
CLERKS OF THE COURSE

REGISTRATION  
CHIEF MARSHALLS

SCRUTINEER  
DRIVING TESTS

SENIOR CONCOURS JUDGES

EVENT CO ORDINATORS

INTERNATIONAL LIASON  
DUKES CAR

COMMERCIAL LIASON  
HOSPITALITY DESK

PUBLICITY

OUTSIDE EVENTS

CLUB SPARES

ROBIN BENDALL  
NEIL MILLINGTON  
ANDREW BLACOW  
CHRIS TAYLOR  
JOHN PRYER  
PETER LAKIN  
LES SIDDLE  
JEFF SIDDLE  
CHRIS HOLT  
ADAM FIRTH  
IAN KERR

MICK FLETCHER  
JIM BETTERTON  
COLIN NEWBY  
DAVID CLARKE  
LES SIDDLE

NORMAN SILK

RICHARD CRABTREE  
MICHAEL MARK

DAVID LARKIN  
ANDREW WISDOM

ALBERT AINSWORTH  
JOHN WIGGINS  
MICHAEL MARK  
IAN WRIGHT

RICHARD BUCKLEY

We take this opportunity to thank all Northern members who with their enthusiasm and support have made this an enjoyable event to organise, special thanks go to: -

Albert and Betty Ainsworth  
John and William Wiggins  
Dorothy Wiggins  
Richard and Jenny Buckley

pre event packs  
applications and bookings  
'catering'  
program design and recipe book

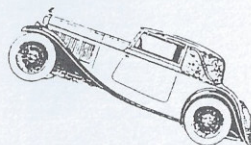
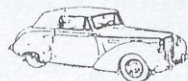
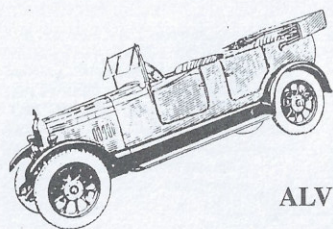
We offer our sincere thanks to the Earl of Harewood, Elaine Speight, Jenny Burrow and the staff of the Harewood House Trust for their continued support and a fine venue. The Sandringham Estate for the loan of the Duke of Edinburgh's car, Pemberton's for the loan of the caravan and not least our sponsors and advertiser who's support has made it possible for us to hold on this event, and finally to all participants for attending International and purchasing this program



# EARLEY ENGINEERING LIMITED

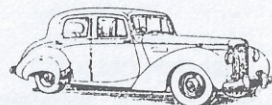
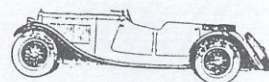


PANT-Y-GOYTRE • ABERGAVENNY • MONMOUTHSHIRE • NP7 9BB  
TEL 01873 • FAX 01873 840504

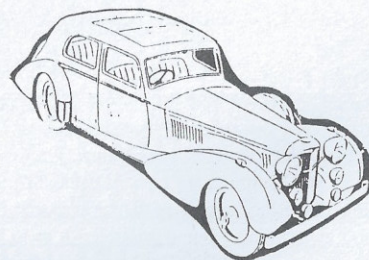


## ALVIS SERVICES AVAILABLE

Servicing  
MOT Tests & Repairs  
Mechanical Repairs  
Mechanical Restoration  
Concours Preparation  
Body Repairs  
Upholstery  
Trimming  
Coach Building  
Chassis Repairs and Straightening  
Coachwork Restoration  
Replating  
International Collection Service and Delivery  
Export Enquiries Welcome  
Chassis and Box Section Rust Proofing  
Timber Frame Repairs  
Modern and Traditional Paint Finishes



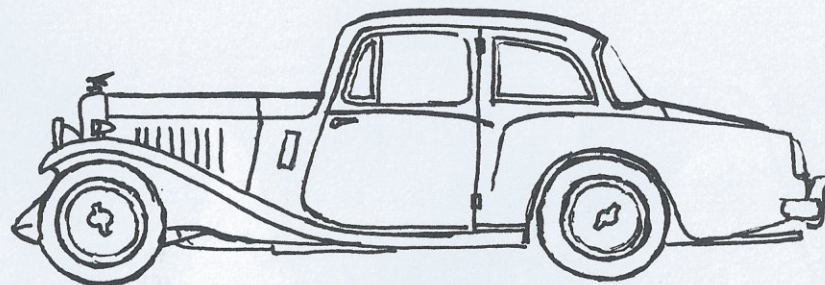
## ALVIS SALES



## Classic Car sales and Restorations

Nicholas J.H. Simpson F.I.M.I

ANY ALVIS IS SPECIAL



But Some Alvis Are Specials  
See The Specials Of The Day

## WARNING TO THE PUBLIC

## MOTOR SPORT IS DANGEROUS

It is a condition of admission that all persons having any connection with the promotion and/or organisation and/or conduct of the meeting, including the owners of the land and the drivers and owners of the vehicles, are absolved from all liability arising out of accidents causing damage or personal injury (whether fatal or otherwise) however caused to spectators or ticket holders.





## OXR 1 by Robin Bendall

We are most grateful to Her Majesty The Queen for granting the loan of HRH Duke of Edinburgh's Alvis from the Royal Collection, I have no doubt the venue of our event this year has a substantial benefit in this regard.

Many of you will be familiar with the photographs that have appeared in past bulletins showing the Duke with his car, unfortunately we have been unable to trace the originals of these photographs so have to rely on copies, as you can imagine while we have the car it will be our intention to create a record for our archive, there is also little documentation on the car itself. The Car Record sheet states it's a 'V.I.P' car and a TD21 RHD 'Car finished and tested by Park Ward and delivered to H.R.H. Duke of Edinburgh by Park Ward in June 1961', it has a steel crankshaft, BN7 gearbox with overdrive, (the car went back to Coventry later to be up rated to a five speed ZF gearbox, it has also been fitted with disc brakes all round). The axle ratio is 3.77:1; wire wheels. All the members for the car have been checked as 26600. The only other information on the build sheet states 'many special items fitted to this car details of which are not available' we also know it was completed on the 3rd July 1961 and delivered by Brooklands of Bond Street on the 23rd of that month, there is a note on the delivery instruction that states, 'Laminated Windscreen Larger than standard.' 'Electrically operated hood'. (There was another car built with numbers 26601, which has a similar build sheet, that car was written off in 1967). The Duke must have been pleased with his car as it has a recorded mileage of 56000.

Roly Simmons (who worked for Alvis at that time) tells me 'it was fairly obvious to the lads on the shop floor that something special was being built as there was suddenly a lot more activity surrounding one particular chassis, a lot of highly polished components were coming through for this particular build, however the major differences occurred at Park Ward, a deeper windscreen to give some three inches more headroom, the power assisted hood, a lot more leather work on the interior trim and fascia, the shut plates on the doors are all stainless and even now the doors close beautifully, they are a joy to open and close.

Prior to delivery the car had a compass fitted into the centre of the dash and the Duke's personal mascot was fitted two-thirds along the centre of the bonnet, the mounting is still there. Prior to delivery the Duke appointed a new chauffeur, Jimmy Lee who had just retired from the Metropolitan Police motorcycle display team that prompted Giles to draw several cartoons showing the car going through hoops of fire. Jimmy Lee spent quite a few weeks at the factory seeing how the car was built and driving round the country side to familiarise himself with it.

It was serviced a few times by Red Triangle, Roly recalls one instance when it needed a repaint, they were told that particular colour and paint was no longer available but when the owners name was known a couple of five litre tins miraculously appeared, and when it needed a new master cylinder which had also been discontinued, a letter from David Michie to Messrs Girling suddenly produced a representative and a further supply of master cylinders was produced.

We have created a montage of interesting items, which is displayed along side the car.



## **AON** *Automotive Division*

As the only classic car broker with a genuine worldwide presence, we can arrange cover for your special car whether you are travelling through the Lake District or Yosemite Park! As a classic car owner, you expect not only the very best cover available but a personal level of service and our client managers are always available to provide help and support wherever you need it.

Some of the policy benefits include;

*Policies tailor-made to your individual requirements*

*Discount for club membership*

*Cover underwritten by CGU and Royal Sun Alliance*

*Breakdown cover can be arranged with Europe Assistance*

*Interest free installments available*

For a quotation, or to discuss your requirements in more detail, please ring Carl Smith or Richard Buckmaster on 01483 - 706070

### **TIM WALKER (RESTORATIONS)**

From a service to a complete restoration.

If you think we can help, please phone for a chat

**Workshop 01296 770596, Home 01296 748419**

[www.timwalkerrestorations.co.uk](http://www.timwalkerrestorations.co.uk)

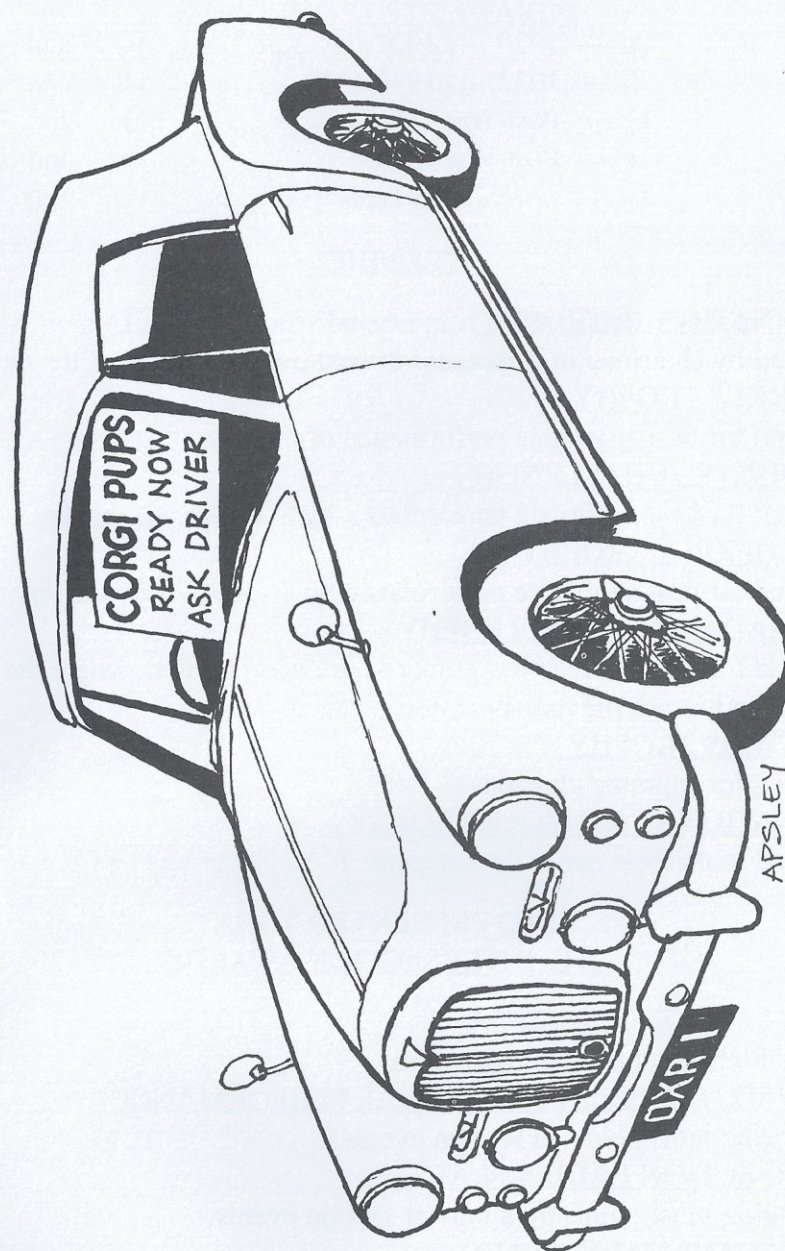


### **G.R.JOHNSON GASKETS**

Copper-asbestos and solid copper gaskets made to order for all vintage and veteran cars

2 Verity Street, East Bierley, Bradford BD4 6PN

Telephone 01274 682298





## CONCOURS CLASSIFICATIONS

### MASTERCLASS AND NOVICE

CLASS	A — 1920 — 1931 (inc 12/60)	1st	2nd	3rd
	B — 1932 — 1940 (All)	1st	2nd	3rd
	C — Post War Saloons	1st	2nd	3rd
	D — Post War Open	1st	2nd	3rd
	E — Specials To Date	1st	2nd	3rd

### TROPHIES

#### INTERNATIONAL TROPHY-

Awarded by chairman of Indematui to best overseas entry of the day.

#### J.J.PARKES TROPHY-

Awarded for best aggregate performance of the day.

#### CHAIRMANS CHALLENGE -

Awarded for best aggregate performance by a 3 Litre, on the day.

#### JOHN HERBET TROPHY -

Awarded for best aggregate performance by a speed 20 on the day.

#### THE MADAM GRABER TROPHY -

Awarded for the best restored graber / park ward bodied, where the restoration has not previously won the award .

#### THE SWISS TROPHY -

Awarded for supreme elegance.

#### THE NATIONAL BENZOLE TROPHY -

Awarded to the best car in the car park.

### ALSO PRESENTED TODAY

### THE INTERSECTION AWARDS

#### INTERSECTION SHIELD -

For the highest total score by section.

#### INTERSECTION BEST INDIVIDUAL PERFORMANCE -

For scoring most points at section events.

#### INTERSECTION LADIES PLATE -

For scoring most points by a lady at section events.

#### SPECIAL MILITARY AWARD

#### SPECIALS AWARD

## TROPHIES

### DRIVING TESTS AWARDS

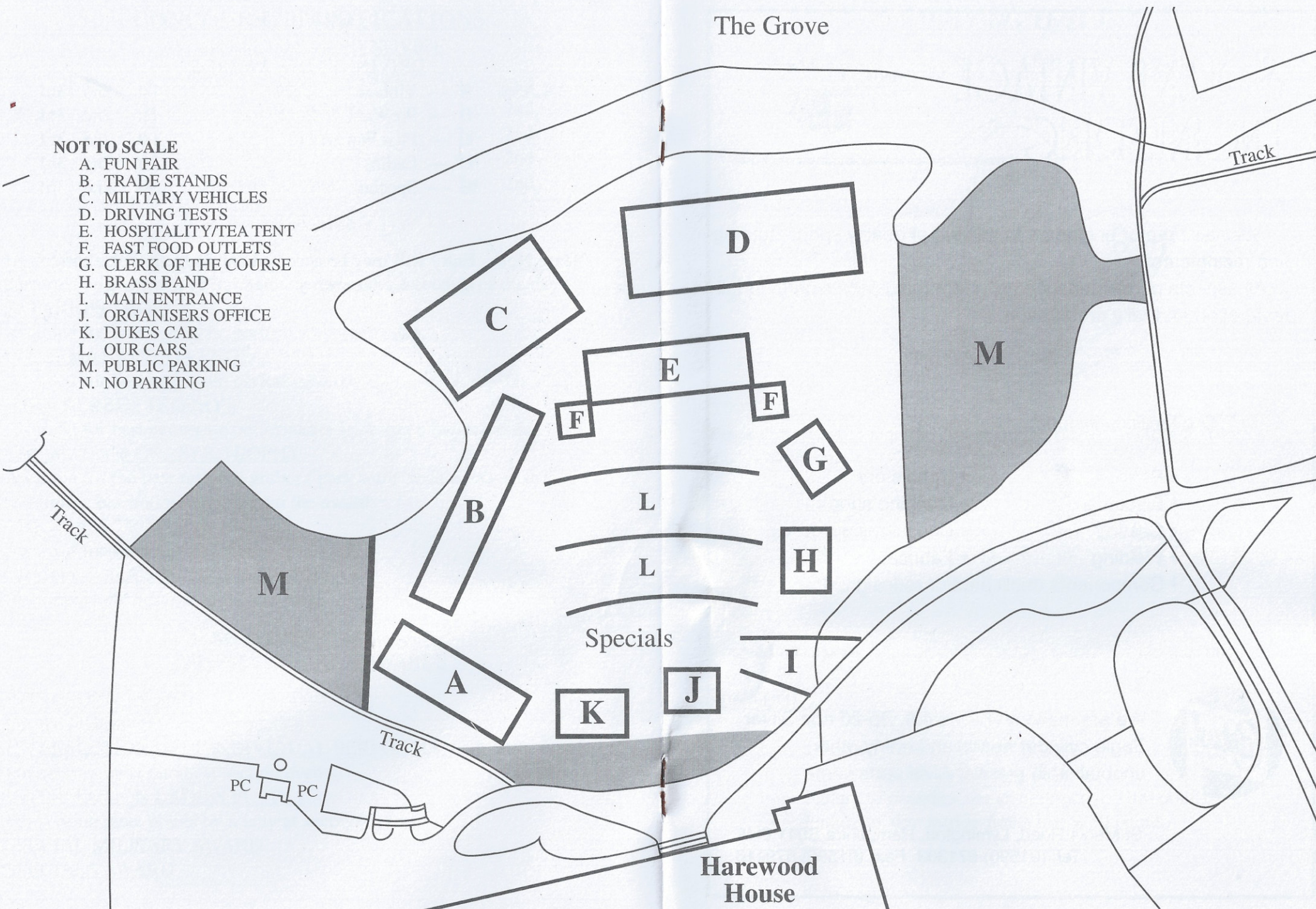
CLASS	A — Vintage (inc 1931)	1st	2nd	3rd
	B — PreWar (1932 - 1940)	1st	2nd	3rd
	C — Post War (All)	1st	2nd	3rd
	D — Ladies	1st	2nd	3rd
	E — Specials	1st	2nd	3rd

Please Note - Entry will only be accepted on production of a current alvis: O.C. membership card



**NOT TO SCALE**

- A. FUN FAIR
- B. TRADE STANDS
- C. MILITARY VEHICLES
- D. DRIVING TESTS
- E. HOSPITALITY/TEA TENT
- F. FAST FOOD OUTLETS
- G. CLERK OF THE COURSE
- H. BRASS BAND
- I. MAIN ENTRANCE
- J. ORGANISERS OFFICE
- K. DUKES CAR
- L. OUR CARS
- M. PUBLIC PARKING
- N. NO PARKING





# SOLENT VINTAGE ENGINEERING



Specialist motor engineers to owners of quality sports, touring and racing cars.

All aspects of maintenance provided from specific parts to full restoration and rally preparation.

Our facilities include:

- Paint
- Electrical
- Casting
- Welding
- Components duplicated or redesigned
- Upholstery
- Machine shop
- Consultancy
- Fabrication



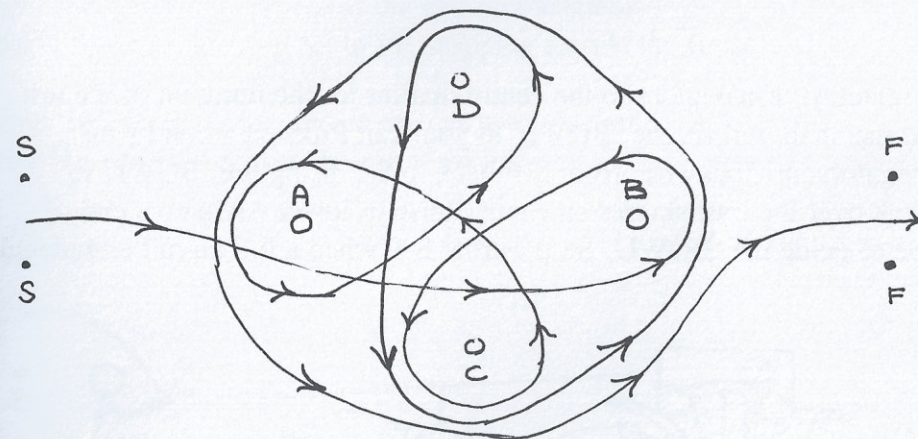
We are makers of Alvis 4.3, Sp 20 and Silver Eagle cylinder heads and many other unobtainable pre-war Alvis parts.

St Marks Road, Lymington, Hampshire S041 8HA  
Tel: (01590) 671303 Fax: (01590) 679116

## DRIVING TEST 1

"WHIRLIGIG"

TIMED



Proceed forward around the course, in the manner indicated. Your navigator should:-

Remove	cup A	to	Post B
Remove	cup C	to	Post A
Remove	cup D	to	Post C
Remove	cup B	to	Post D

Proceed around the outside of the course, to stop astride the finish line FF

### PENALTIES

1 Sec = 1 Point

Striking a post or marker = 25 points

Failure to complete the test correctly = 100 points

Failure to stop astride finish line = 50 points

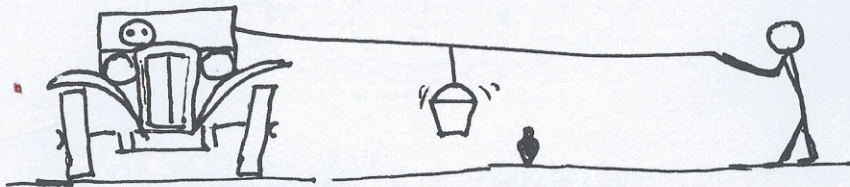


## DRIVING TEST 2

“AUTOSKITTLE”

NOT TIMED

Despatch your navigator to the centre marker for the duration of the test. The marshall will fix the ‘BOWL’ to your car. Proceed around your navigator, anticlockwise, from S-F back to S-F using the ‘BOWL’ to knock over the four skittles en-route. Raise or lower navigators end of rope to guide the ‘BOWL’. Stop astride S-F when a full circuit completed.



**No reversing! Dont let the ‘BOWL’ touch the floor!**

### PENALTIES

Failure to knock over a skittle = 25pts

Allowing bowl to touch floor = 10pts

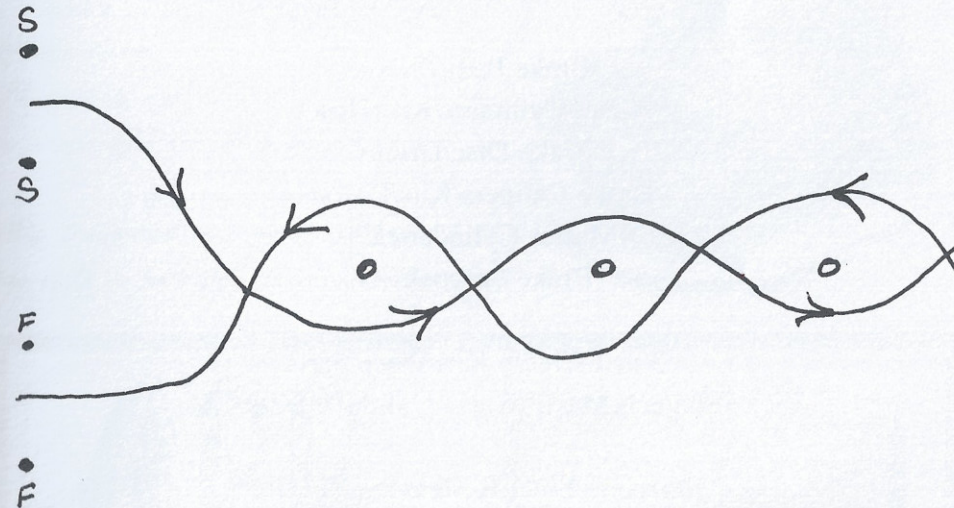
Navigator stepping off the centre marker = 50pts

## DRIVING TEST 3

EGG & SPOON TIMED

Your navigator is to transport the egg on the spoon  
OUTSIDE the car from SS to FF, stopping astride the finish.

Hold the egg & spoon outside the car with one hand.  
Stop the car and recover the egg if dropped.



### PENALTIES

1 Second = 1 point

Failing to halt with navigator dismounted = 25pts

Failing to stop astride line = 50pts

Striking a cone or marker = 25pts



# Past Parts Ltd

6 CHAMBERLAYNE ROAD, MORETON HALL INDUSTRIAL ESTATE,  
BURY ST. EDMUNDS, SUFFOLK, IP32 7EY.

TEL: 01284 750729 FAX: 01284 756240

Email: [restore@pastparts.com](mailto:restore@pastparts.com) Web Site: <http://www.pastparts.com/>

***Specialised components for the older vehicle.***  
***Our product range include***

Brake Pads/Shoes  
Wheel Cylinders/Kits/Hoses  
Brake Disc/Drums  
Brake Calipers/Kits/Pistons  
Master Cylinders/Kits  
Brake Servos/Kits

3 in 1 Clutch Kits/Piece Parts  
Clutch Master/Slave Cylinders/Kits

**Stainless Steel Resleeving Service**  
**of all types of Brake & Clutch Cylinders + Dunlop Calipers**  
**for all car, commercial and industrial vehicles.**

Steering and Suspension Parts  
Shock Absorbers

INTERNATIONAL MAIL ORDER SERVICE  
CHEQUE/VISA/MASTERCARDS/SWITCH

**PAST PARTS LTD**

RECREATING MOVING HISTORY

**JUST RELEASED**

## *A Taste of Northern Alvis*

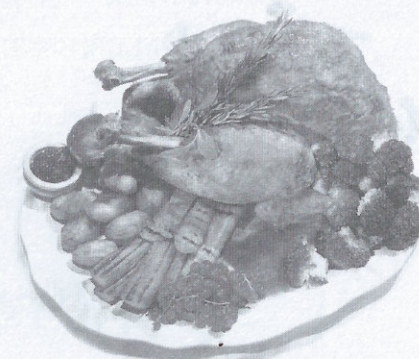
*The ultimate recipe book a compilation of tried and tested family recipes from the members of the Northern Section. Family recipes never revealed before*

*It will make a wonderful gift for all your friends*

*Available in the Hospitality tent or  
Oliver's Cabin.*

*A must to add to your  
collection of Alvis memorabilia.*

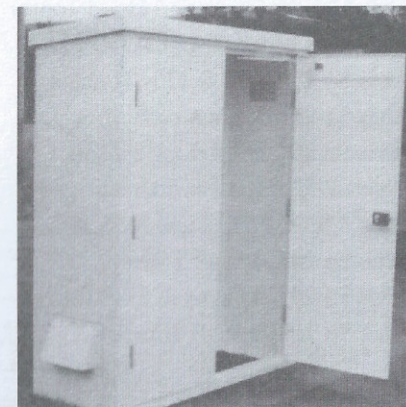
*Buy today and save money, it's not  
too early to look for Christmas presents.*



# APR

FIBRE GLASS PRODUCTS

PART OF  
**Lamplas**  
(DURHAM) LTD



Specialists suppliers to the Water and Transport Industries.  
Approved by many Water Authorities.

Pont Factory, Leadgate, Consett, Co. Durham, DH8 6LA.

Tel: (01207) 502474 Fax: (01207) 500407



# MIKE FISHER RESTORATION LTD

*Specialists in the Restoration and  
Careful Conservation of Fine Automobiles*

BUILDING 326 • UNIT 10 • RUSHOCK TRADING ESTATE  
DROITWICH • WORCESTERSHIRE • WR9 0NR

TELEPHONE/FAX: 01299 251628

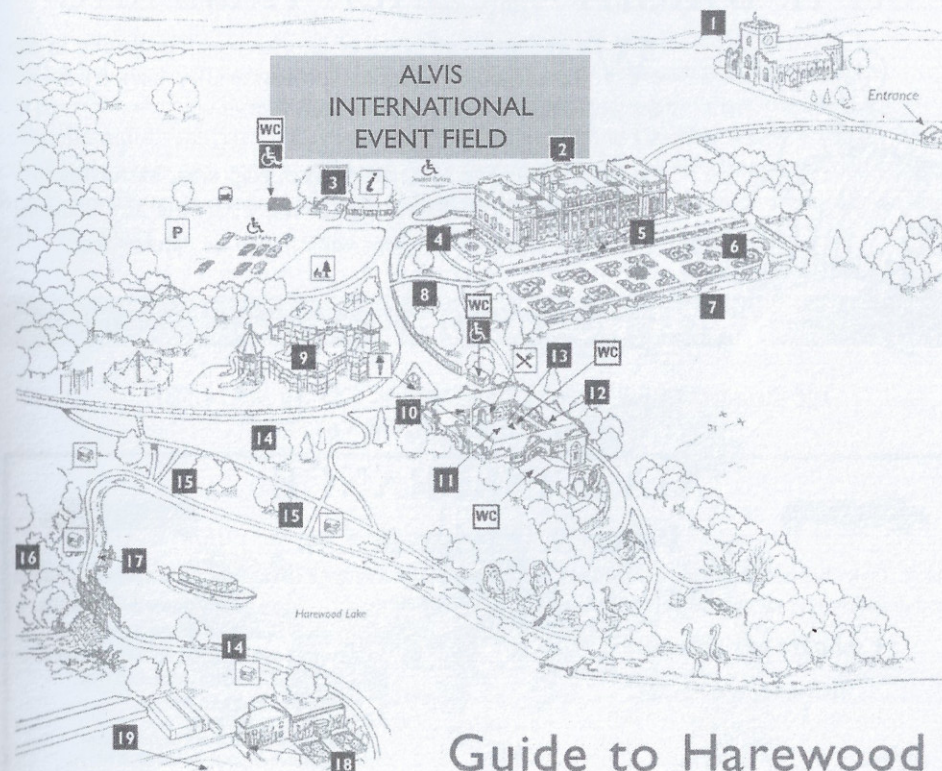
Over the years we have carried out full chassis up restorations and major rebuilds, most to our high concours winning standards, some to customers own requirements.

## *Some of the cars include:*

- |                                       |  |
|---------------------------------------|--|
| 4 Alvis 4.3 Short Chassis VDP Tourers | 2 Alvis Sp 20 SD Cross & Ellis Tourers |
| 1 Alvis 4.3 Short Chassis VDP dhc     | 3 Alvis 4.3 Specials                   |
| 1 Alvis 4.3 VDP Concealed Hood Tourer | 2 Alvis 12/60 Beetlebacks              |
| 1 Alvis 4.3 Offord dhc                | 1 Alvis 12/50 Narrow 4 seater Tourer   |
| 3 Alvis Sp 25 Cross & Ellis Tourers   | 1 Alvis 12/50 Special 2 seater Tourer  |
| 3 Alvis Sp 25 Charlesworth dhcs       | 1 Alvis 12/50 Brooklands Racer         |
| 1 Alvis Sp 25 VDP 2-door Saloon       | 3 Alvis Front Wheel Drive Tourers      |
| 2 Alvis SP 25 Charlesworth Saloons    | 1 Alvis TA 14 Carbodies dhc            |
| 1 Alvis 3.5 VDP Pillarless Saloon     | 1 TF Graber Saloon                     |
| 3 Alvis Sp 20 SA VDP Tourers          | 4 TD Park Ward Saloons                 |
| 1 Alvis Sp 20 SA Cross & Ellis Tourer | 2 TD 21 Park Ward dhcs                 |
| 1 Alvis Sp 20 SD VDP Tourer           | 1 TC 108G Saloon                       |

Along with servicing, maintaining and MoT'ing many other Alvis cars, we are also known for our restorations and maintenance of W.O. Bentleys, Derby Bentleys, Rolls Royce, Bugattis, Lagondas, Rileys, a Lanchester 40, a 1912 Sunbeam, the RAC 1901 Mors, 1897 Simms and 4.3; Aston Martins, Jaguars and one HRG.

*The secret is out!*



## Guide to Harewood

- CAR PARK
- COACH PARK
- DISABLED PARKING
- TOILETS Disabled and baby changing facilities
- INFORMATION CENTRE, BOX OFFICE AND HAREWOOD CARD DESK Public Telephone
- ICE CREAM KIOSK
- SEATS/SHELTERS

- ALL SAINTS CHURCH 1
- MAIN ENTRANCE TO HAREWOOD HOUSE & WATERCOLOUR ROOMS 2
- PLANT CENTRE AND GIFT SHOP 3
- OLD KITCHEN 4 Open every weekend
- TERRACE GALLERY CONTEMPORARY ART 5
- TERRACE GARDENS 6
- ARCHERY BORDER 7
- WEST GARDEN 8
- ADVENTURE PLAYGROUND 9

### THE COURTYARD

Includes:

- CAFÉ Opens 10.00am, closes 5.00pm
- 10 GIFT SHOP Opens 10.30am, closes 5.00pm
- 11 COURTYARD GALLERY
- 12 COURTYARD SUITE, FUNCTION ROOM AND MARQUEE LAWN
- 13 BIRD GARDEN ENTRANCE \* Opens 10.00am
- 14 WOODLAND GARDEN \*
- 15 LAKESIDE WALK \* Family Fun Trail
- 16 THE ROCK GARDEN, CASCADE & STEPPING-STONES \*
- 17 BOAT JETTY Sailing normally 12noon - 4.30pm
- 18 WALLED GARDEN
- 19 SPIRAL MEADOW An innovative environmental art installation in the Walled Garden.



# GARY H. WRIGHT — COACH TRIMMING



We undertake all types of interior coach trimming in the finest quality materials, professionally carried out by ex-Rolls-Royce and Aston Martin craftsmen.

We specialise in Aston Martin, Lagonda, Mercedes Benz, Rolls-Royce and Bentley cars but any Veteran, Vintage, Classic or Modern vehicle can be catered for.

Please telephone or write for friendly discussion, advice or quotation.

126 TANNERS DRIVE, BLAKELANDS, MILTON KEYNES MK14 5BP.

TEL: NEWPORT PAGNELL (01908 ) 617774

## ALVIS INSURANCE

**Peter S. Taylor & Co.**

Peter S. Taylor has been established since 1949 and offer a special insurance scheme for Alvis Owners. Allianz Cornhill underwrites the scheme at very competitive rates. Why not take a look at our premiums and benefits.

### Compare our premiums

**Alvis 4.3 Sports Special**  
Drivers 25 & over, value £28,000.  
**£154.00**

**Alvis TA14 Saloon**  
2 named drivers, value £9,000.  
**£80.00**

MEMBER



General Insurance  
STANDARD COUNCIL

**Alvis Speed 20 Open Tourer**  
Drivers 25 & over, £250 Accidental  
Damage excess, value £45,000.  
**£154.00**

Premiums are subject to Insurance Premium Tax currently 5%. These assume all drivers are over 25 with a clean driving record and the mileage limit is 3,000 per annum. Premiums and terms available for members that do not meet this.

If you would like a free and without obligation quote, please contact us:  
(01273) 820303 – First Floor 81 Church Road, Hove East Sussex, BN3 2BB



# PEMBERTON

PEMBERTON LEISURE HOMES LIMITED

Woodhouse Lane, Wigan, Lancashire, WN6 7NF

Tel: 01942 321221 - Fax: 01942 234150

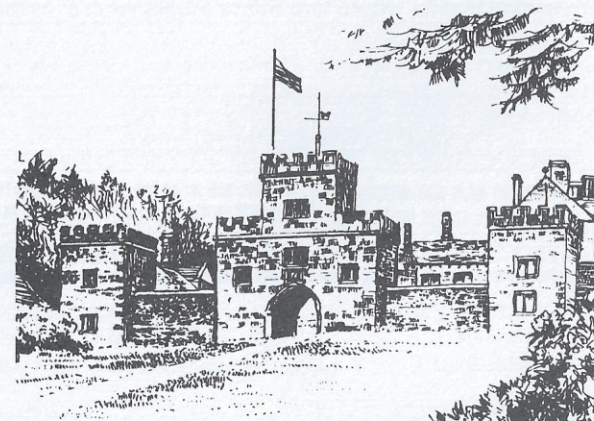
**www.pembertonlh.co.uk**

## ITS NOT TOO EARLY TO PUT NEXT YEARS EVENTS IN YOUR DIARY

June 2003

A VERY Lancashire weekend in beautiful country, it will feature two very different events for Saturday, famous Lancashire entertainment and a trip to the seaside perhaps a little championship golf? The event hotel is the Novotel at Chorley where a very competitive rate has been negotiated. Very secure parking, we have taken over the whole hotel, our dinner promises you some gastronomic treats and the International Alvis Day will take place at.

## HISTORIC HOGHTON TOWER



## Dramatic 16th Century Fortified Hilltop Manor House

Seat of Sir Bernard de Houghton Bt. DL.

Ancestral home of the de Houghton family since William the Conqueror. Built on its hill 650ft above sea level. See the magnificent Banqueting Hall where King James I in 1617 knighted the Loin of Beef 'Sirloin' and where William Shakespeare had started his working life (1580s). View the beautiful King's Ante-Chamber, the Ballroom, King's Bedchamber and other staterooms used by England's kings and queens. Come and see the Tudor Well House (horse-drawn pump/oaken wind-lass), the underground passages (Lancashire Witches), wine cellar and dungeons. Enjoy the wonderful vistas, grounds and gardens.

SPECIAL DOLLS' HOUSES EXHIBITION





**angstone Tyres**

D & A Cawley,  
Doncaster Road, Bawtry,  
Doncaster, DN10 6NX  
Tel: 01302 711123  
Fax: 01302 710113

VETERAN/VINTAGE/CLASSIC TYRE AND WHEEL SPECIALISTS

**WE STOCK ALL MAKES OF VINTAGE TYRES**

See us at the following events where tyre fitting & balancing is available:-

23rd June V.S.C.C. Cadwell	31st August B.D.C. Silverstone
6th July V.S.C.C. Shelsey	1st September V.S.C.C. Loton Park
21st July V.S.C.C. Mallory	21st September V.S.C.C. Silverstone
3rd/6th August V.S.C.C. Prescott	

THESE DATES ARE PROVISIONAL

TYRE FITTING AND BALANCING  
AVAILABLE AT ALL VSCC MEETINGS

CALL AND SEE US AND DISCUSS ALL YOUR TYRE AND  
WHEEL PROBLEMS. WE SHALL BE PLEASED TO HELP YOU

**VETERAN/ VINTAGE/CLASSIC TYRE AND WHEEL SPECIALISTS**



SWAN ROAD, HARROGATE, NORTH YORKSHIRE HG1 2SR  
TELEPHONE: 01423 500055 FACSIMILE: 01423 501154  
WEBSITE: [www.oldswanhotel.com](http://www.oldswanhotel.com)

*The perfect location for business and leisure pursuits 136 bedroom  
'Country House' style of hotel, surrounded by 6 acres of  
beautiful gardens, in the centre of Harrogate.*

*For more information please telephone the Old Swan on 01423 500055*

WINE OFFER VOUCHER  
BOTTLE OF HOUSE WINE PER COUPLE  
WITH DINNER  
ON PRESENTATION OF THIS VOUCHER  
Offer valid to end November 2002

# HIGHTONE restorations ltd.

NORTH OXFORDSHIRE SPECIALISTS

Complete restorations, servicing and repair of all ALVIS cars, including panel-making, painting, trimming, ash framing, re-wiring, mechanical rebuilding and servicing. All work carried out to the highest standards.

Unit 5, Enstone Airfield, Enstone, OX7 4NP  
Phone 01608 677328 for Personal Attention.

## The Craven Trust

Organiser of the Dales Recovery Fund

The Craven Trust raised and distributed £1.2m. to assist businesses, individuals and organisations which suffered heavily as a result of the Foot and Mouth Crisis.

The Trust is a charity operating in the Craven area and under normal circumstances is able to distribute £10,000pa to such causes as village halls, Malham Tarn Centre, Senior Citizens groups and Youth Brass Bands.

**WE NEED YOUR HELP TO CONTINUE OUR WORK SUPPORTING THE COMMUNITY**

For further information or to make a donation contact  
Richard Crabtree on 01729 840 108

## Trevor J Hirst Restoration and Coachwork



Double curvature work, Ash Frames, Wings, Windscreens, Hoods  
Owner Club References Available

◆  
COMPLETE RESTORATION SERVICE  
◆

Tel: (+44) 01425 614177 (day) Tel (+44) 01202 470449 (eve)

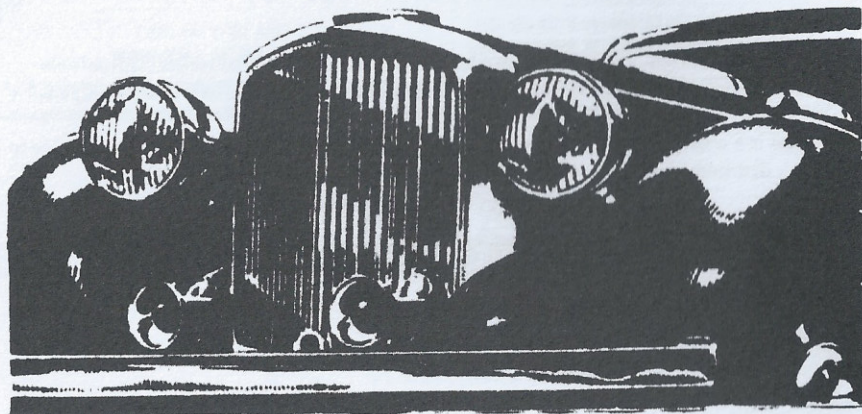
[www.trevorhirstcars.co.uk](http://www.trevorhirstcars.co.uk)



# WALKERS RADIATORS LTD

Specialist repairers and restorers of all types of radiator,  
heater and oil cooler. Prompt service at reasonable rates  
with quality guaranteed  
(A.O.C. members available for reference).

Nationwide low cost collection and delivery service.



Telephone Colin Newby (M.D.) on:  
01282 843151 (day) or 01282 844273 (evenings)

*Help and advice freely given. I am always pleased to chat  
with fellow club members.*

UNIT 3, SOUGH BRIDGE MILL, COLNE ROAD, EARBLY, VIA COLNE, LANCASHIRE.